



Blending professionalism with supreme comfort, this beautiful tri-blend sweater is an exceptional addition to any work wardrobe.

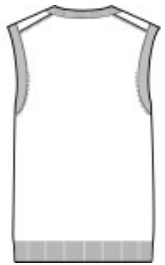
- 56/29/15 cotton/nylon/acrylic
- Fully-fashioned seams
- Machine washable
- 2x2 rib knit collar, armholes and hem

**CARE INSTRUCTIONS**

Turn Garment Inside Out. Machine Wash Cold With Like Colors. Gentle Cycle. Only Non-Chlorine Bleach When Needed. Reshape And Lay Flat To Dry. Warm Iron If Needed.



front



back

**HOW TO MEASURE**



**CHEST WIDTH**

Measure under the arm and around the fullest part of the chest with arms down, keeping tape horizontal.

**SIZE CHART**

	XS	S	M	L	XL	2XL	3XL	4XL
Chest	32-34	35-37	38-40	41-43	44-46	47-49	50-53	54-57

**COLOR INFORMATION**

Please note: PMS code information is shown only when an exact match is available.



Charcoal Heather  
PMS 7540C



Deep Black  
PMS BLACK C



River Blue Navy  
PMS 533C